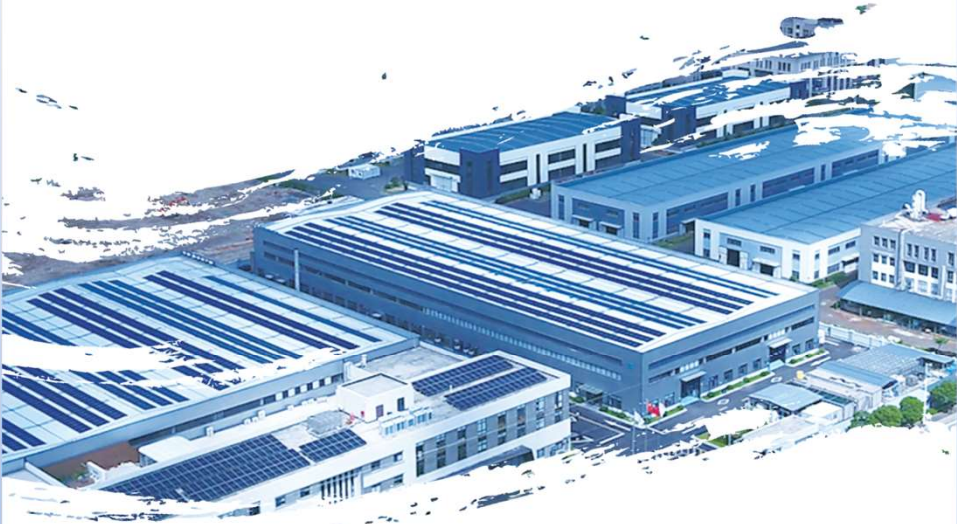




SEA-LION



Sustainable Washing Systems



Technology and Innovation
lead Sea-lion into the future of
sustainable, global industrial and
commerical washing.





SEA-LION'S LAUNDRY DRAGON

SDX series

Sea-lion's Laundry Dragon

Superior performance

Bottom transfer transmission for safe and reliable operation

Powerful mechanical action enhances highest degree of cleaning

Manufactured in accordance with strict quality and hygienic standards

The most advanced technology in the world being adopted and combined with our own technology and experience, the first tunnel washer in China has been successfully developed and produced by Jiangsu Sea-Lion Machinery Co., Ltd.

Combination of single and double drums, strong ribs and optimum ratio between conveyor and the volume of chambers, combined with powerful mechanical force produces the highest level of cleanliness.

Design of the drum and the connecting lines conform to Quality and Hygienic Standards so that best quality of washing can be achieved.

Reliability, long life, conciseness and low maintenance cost are the pursuit of the *Laundry Dragon* tunnel washer system.

01/02

SDX Tunnel Washing System

Sustainable Washing Technology

MAIN COMPONENTS:

Automatic weighing loaders provide a simple and accurate way to transfer loads to the tunnel washer. Operator need only place laundry into first grid of the conveyor, and the system will automatically weigh it, display the weight on the control panel and give action instructions.

Alternative to automatic loading conveyor, overhead rail system with weigh loading sorting stations can be configured to prepare laundry for the tunnel washer.

Automatic Loading Conveyor with Weighing Device

Tunnel Washer

Suitable for high-quality washing of various fabrics. Bottom transfer design has excellent batch transmission with virtually no clogging. Perfect combination of downstream and countercurrent flow, results in excellent washing quality. Saves on steam, water, electricity and detergent consumption, as well as labor and floor space. Using water recirculation technology, water and steam consumption are greatly reduced. Operation is simple and smart. Control has 100 built-in washing programs, is field programmable, and can be accessed remotely for technical support. Washer can be customized for specific needs.

Shuttle

The shuttle is used to transport linen cakes that have been washed and extracted to the pass-through type dryers for drying. Available in single and double cake configurations. Safe operation via safety fencing and light guards. Strong rail and shuttle construction for reliable operation.

Automatic Pass-Through Dryer

Specially designed to break up, organize and thoroughly dry dehydrated laundry fabrics. Available in steam or gas heating: Steam features "Rain Forest" heating method. Gas features 2-stage burner. Multiple control methods such as time, humidity, and temperature for best drying. Inverter controlled motors on drive and fans. Automatic lint filter function with available vacuum collector. Cylinder supported by strong roller bearings. Linen discharge by air blast (no tilting).

Extraction Press / Centrifuge Extractor

Hydraulically driven, head pressure is infinitely adjustable up to 45 bar. Graphical real-time monitoring of the entire pressing process, with 100 built-in pressing programs.

With unique wringing and rinsing function, rinsing is more thorough. Reinforced pressure head enables seamless pressure regulation. Finished press cakes can be discharged axially or sideways. Upper and lower steel beams are supported by four structural steel columns, and the anti-corrosion design is safe and reliable. Loading and unloading logic adopts fuzzy control technology and infrared induction for convenient and safe operation.

For more flexible processing, a pass-through centrifuge extractor can be fitted to end of tunnel washer. Ideal for items that may be damaged by press. Features programmable extract speeds, and air bag and shock suspension system for smooth operation.

Environmental protection
Energy conservation

03/04

SCADA Control System



Intelligent Automation



Efficient, energy-saving, labor-saving,
real-time tracking and visualization.

Medical Laundry

SEA-LION



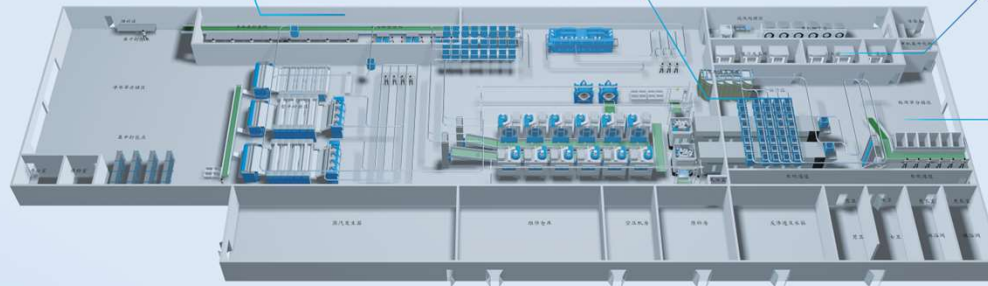
Clean Linen Rail



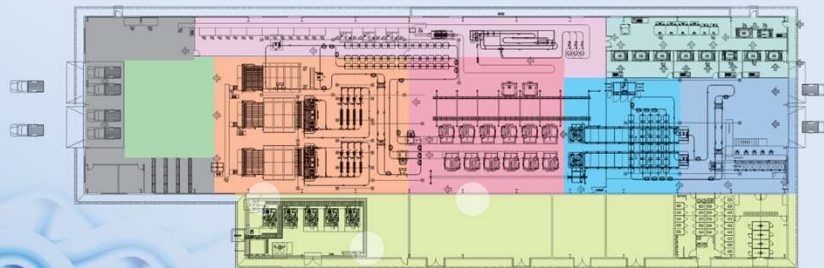
Tunnel Washers



Infectious Washing



Soiled Sort



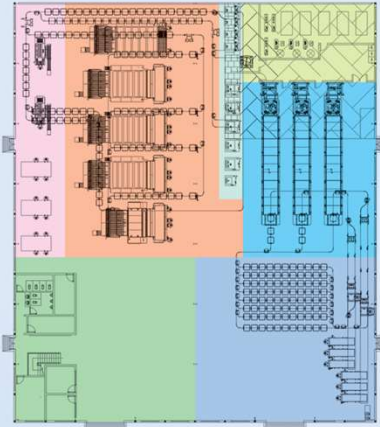
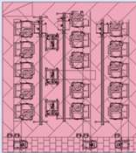
- Unloading and Soiled Sorting Area
- Tunnel Washing Area
- Barrier Washing Area
- Drying Area
- Finishing Area
- Folding and Packaging Area
- Clean Linen Area
- Loading and Packaging Area
- Auxiliary Area

97108

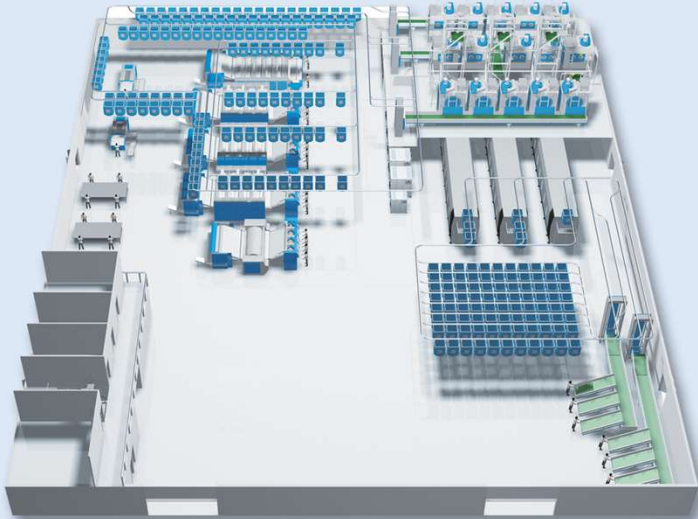
Hotel Laundry

SEA-LION

Mezzanine
Drying Area



- Soiled Sorting Area
- Tunnel Washing Area
- Drying Area
- Stand-alone Washing
- Finishing Area
- Towel Folding Area
- Clean Linen Area
- Auxiliary Area



Site Photos



091010



Features

Water flow meters precisely control water supply for each compartment, and conductivity rate is continuously monitored.

Bus-manifolds are adopted for pneumatic system.

Rinse steps can be done in individual or combination to ensure highest level of washing quality.

No risk of blockage as bottom transfer is adopted.

Two tanks fitted with lint filters for water recovery.

Color changing function without need of empty modules.

Over-flow device is installed on the outer drum to control foam and lint.

Managed by color touch screen SCADA based controller with multiple consoles and multi-language display. Entire system processes are monitored, including: 100 washing programs; additive amount of washing detergents and chemicals; temperature monitoring; water flow; water change during washing; washing time / cycle time; transference of customers codes from press to dryers to rail system.



Conventional model Technical Specifications
(Tunnels can be customized according to user requirements (7-16 modules))

Model	Capacity/Compartment	Cycle	Water Pressure	Steam Pressure	Compressed Air Pressure	Rated Power	Motor Power	Electrical	Net Weight	Operating Weight	Dimensions (L/W/H)
	kg	min	Mpa	Mpa	Mpa	kW	kW	V/Ph/Hz	kg	kg	mm
SDX60-16	60	2-2.5	0.2-0.4	0.4-0.6	0.4-0.8	24.2	22	480/3/60	20700	26000	15190/2456/3280
SDX80-16	80	2-2.5	0.2-0.4	0.4-0.6	0.4-0.8	34.4	22	480/3/60	25000	31400	16980/2670/3550

0111012

Professional Finishing System

Intelligent Laundry Solution



AUTOMATIC SPREADER/FEEDER



Eight-inch color touch screen is programmable and computer controlled. Each feeding station has statistical function to accurately measure feeding quantity per operator. Linen suction and smoothing function improves the flatness of the linen. Discharging platform can be automatically extended and retracted, so there is no need to move the machine when ironing small pieces of fabric, making it flexible and easy to operate. Bionic spreading robot arms are driven by servo motors to keep linen in the specified feeding position.

Model	ZBQ3500-IV-H	
Electrical	V/Ph/Hz	480/3/60
Rated Power	kw	18.35
Wire Diameter	mm ²	6
Power Consumption	kw.h	12
C.A. Pressure	Mpa	0.6-0.7
C.A. Connection	mm	Φ16
C.A. Consumption	L/min	110
Speed	m/min	0-50
Maximum Width	mm	≤3500
Dimensions (LxWxH)	mm	5290/2920/2480
Total Weight	kg	5400

HIGH SPEED SERPENTINE FLATWORK IRONER



Fitted with frequency inverters, users can choose appropriate ironing speed according to the needs of different fabrics and ironing conditions. Steam method heats the ironing surface and has high thermal efficiency. Using the combination of belt drive and chain drive, it has both a large load-bearing capacity and a certain degree of buffering. Gear reducer produces optimal speeds, has a large reduction speed ratio, strong overload capacity and low noise. The material conveying system uses wide-width spindle belts to avoid the difficult-to-solve swimming phenomenon of wide-width canvases during processing.

Model	YZ5V1-3400(705)	
Electrical	V/Ph/Hz	480/3/60
Rated Power	kw	7.35
Wire Diameter	mm	6
C.A. Pressure	Mpa	0.4-0.6
C.A. Connection	mm	Φ8
C.A. Consumption	L/min	6
Steam Pressure	Mpa	0.6-0.8
Steam Pipe Diameter	DN	50
Return Pipe Diameter	DN	40
Speed	m/min	0-50
Maximum Width	mm	≤3400
Cylinder Specifications	mm	Φ705/3420
Dimensions (LxWxH)	mm	4960/4840/1960
Total Weight	kg	14750

HIGH SPEED FLATWORK FOLDER



The fully automatic folding machine is used to fold larger fabrics such as sheets, duvets, and tablecloths after they have been ironed or dried. Machine has a high degree of automation, low power consumption, low noise, good folding effect, beautiful appearance and reasonable design. The intelligent control system selects the corresponding folding program according to different types of linen to complete the folding. Each control component adopts 24V DC low-voltage components, which is safe, reliable and easy to repair and maintain. Each control valve adopts pneumatic control, with fast and reliable action. 4th and 5th folds adopt forward and reverse control, whereby fold quality is not affected by the thickness and material of the linen. The folded length of linen is measured by a photoelectric sensor to ensure that each fold is in its middle position.

Model	ZD3400-V-DF	
Electrical	V/Ph/Hz	480/3/60
Rated Power	kw	4
Wire Diameter	mm ²	4
Power Consumption	kw/h	0.8
C.A. Pressure	MPa	0.6-0.8
C.A. Consumption	L/min	60
C.A. Displacement	m ³ /min	0.3
Speed	m/min	60
Maximum Fold (LxW)	mm	4000x3300
Dimensions (LxWxH)	mm	4100/3520/1890
Total Weight	kg	2230

0131014

Pre-sale

Provide customers with product introductions and relevant production and utility data required for the establishment of efficient laundry facility.



Investigate market demand, prepare program proposals, and list detailed descriptions of equipment configuration and related auxiliary supporting requirements (water, electricity, steam, sewage, plant construction requirements).



Prepare facility planning drawings and scheme design.



Sale



Provide detailed water, electricity and steam diagrams of the equipment in the facility (basic drainage diagram, steam, water, compressed air, exhaust pipe direction diagram)



Develop a plan

Installation, Startup & Troubleshooting



Training Guidance

File submission for approval



After Sale

North American factory office located in Westbrook, CT USA.



All tunnel systems include remote access to Sea-lion Engineering via Sunlogin remote control.



Technical support communications are setup through WeChat group chats to include customer service center, technical support and Engineering, and sales personnel.

For system installations a consignment of commonly used spare parts are stocked at customer site, while uncommon spare parts will be shipped via courier from USA office or factory.



Support



3-D Virtual Planning

- Produce 3-D models of all equipment for project
- Build a 3-D space diagram of project
- Produce complete set of renderings for project
- 3-D assets for encapsulating laundry project
- Deployment of 3-D plans for laundry project
- Make complete VR scene map of the laundry facility (at an appropriate cost)



Facility Operation Management Manual (Medical Laundry / Hotel Laundry)

- Provide a research report on the operating status
- Provide interview reports of employees at all levels
- Provide laundry factory completion system form
- Provide all operation instructions for equipment

Training

Complimentary Factory Training



Introductory Training

Training content

- Mechanical principles of machinery
- Electrical principles and electrical control
- Washing machine operation training
- Detergent selection
- Laundry technology training
- Laundry equipment maintenance and upkeep training
- Laundry management training
- Daily use safety training

Advanced Training

Training content

- Mechanical principles of machinery
- Electrical principles and electrical control
- Washing machine operation training
- Laundry plant management
- Washing Technology
- Detergent selection
- Design and planning of laundry plant



Innovation drives development. Quality creates brand.



www.chinasealion.com

JIANGSU SEA-LION MACHINERY CO., LTD.
ADD: Leyu Town, Zhang Jia Gang City, Jiangsu, China
TEL: +86-512-58602532 58602551
FAX: +86-512-58602532
P.C: 215621
E-mail: sealion@vip.163.com



www.sealionamerica.com

SEA-LION AMERICA COMPANY
ADD: P.O. Box 1063, Westbrook, CT 06498 USA
TEL: 860-316-5563
E-mail: sales@sealionamerica.com